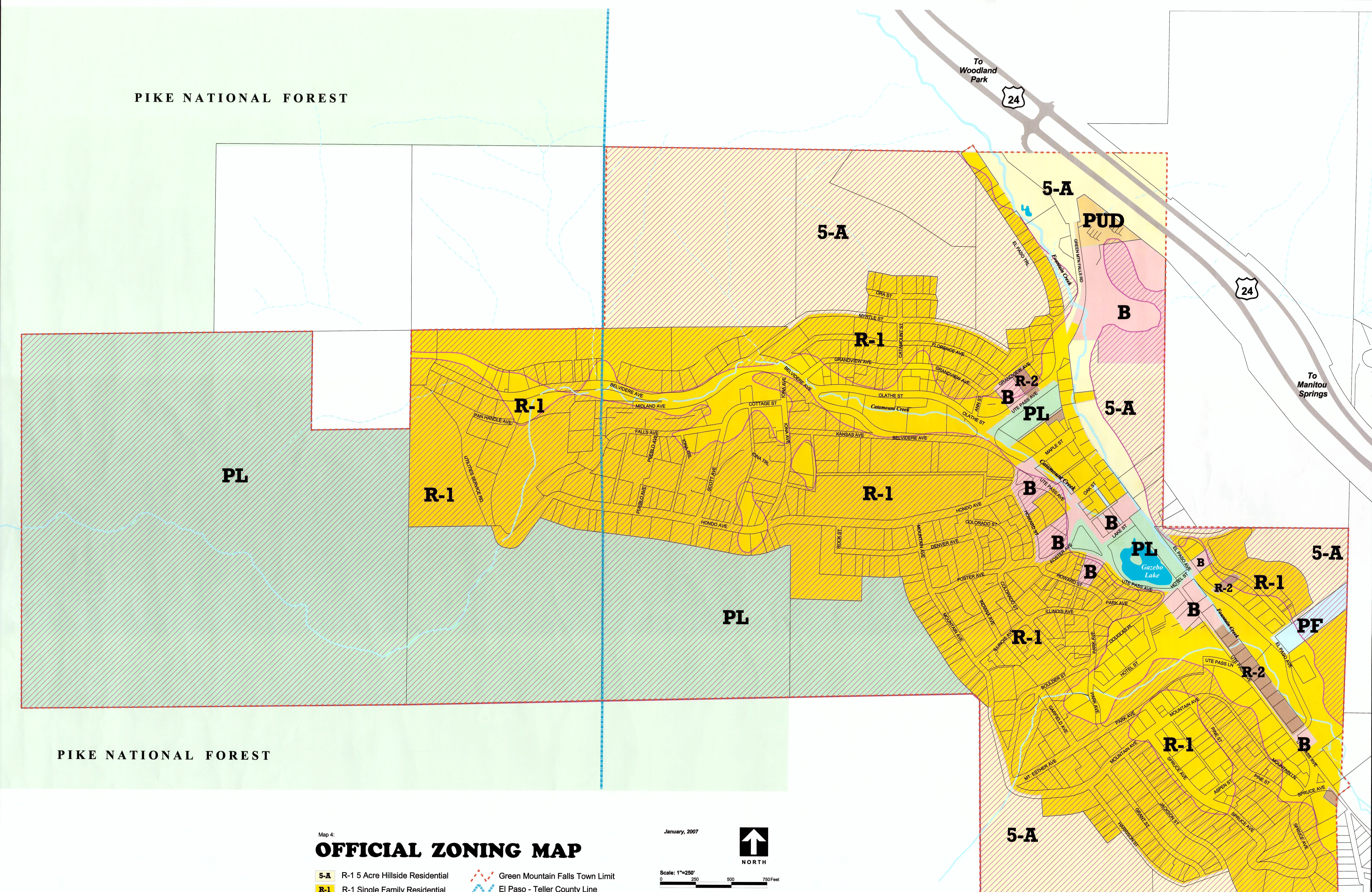


PIKE NATIONAL FOREST

To Woodland Park



To Manitou Springs



PIKE NATIONAL FOREST

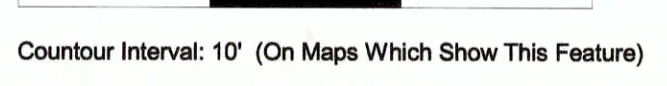
Map 4:  
**OFFICIAL ZONING MAP**

- 5-A R-1 5 Acre Hillside Residential
- R-1 R-1 Single Family Residential
- R-2 R-2 Two-Family Residential
- B B Business District
- PF PF Public Facilities District
- PL PL Public Lands District
- PUD PUD Planned Unit Development
- Hillside Overlay Zone Hillside Overlay Zone
- Green Mountain Falls Town Limit
- El Paso - Teller County Line
- Parcels
- Pike National Forest

January, 2007



Scale: 1"=250'



Contour Interval: 10' (On Maps Which Show This Feature)

Map Sources: Colorado Springs Utilities digital geographic data and the Teller County Geographic Information System as Modified by the Town of Green Mountain Falls.

All data and information contained herein are for planning purposes only. The information does not replace legal description information in the chain of title and other information contained in official governmental records such as in County Clerk and Recorders office or in the courts. Also the representations of location in this map data cannot be substituted for actual legal surveys.

The information contained herein is believed accurate and suitable for limited use and subject to the limitations set forth above. The Town of Green Mountain Falls makes no warranty as to the accuracy or suitability of any information contained herein. Users assume all risk and responsibility for any and all damages, including consequential damages, which may flow from the user's use of information.

Prepared by:



**COMPREHENSIVE PLAN UPDATE**